

$2\phi 22 - 1\phi - \phi 4$ $2:37^{am}$ AKDT
= 1 h 38 m AST

Jupiter $13 \phi h$ 12 m / $-0^{\circ} 25'$

Mars 5 h 21 m / $+22^{\circ} 36'$

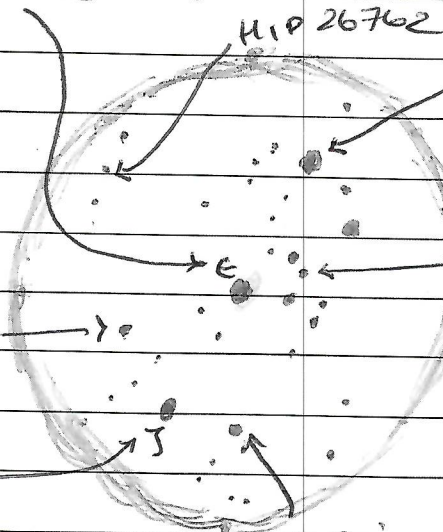
ϵ Orion 5 h 37 m / $-1^{\circ} 11'$

γ Cygnus $2\phi h$ 23 m

pulsating variable
double Orion's Belt

Alinam (ϵ Ori)

RA 5h 37m
Dec -1° 8'



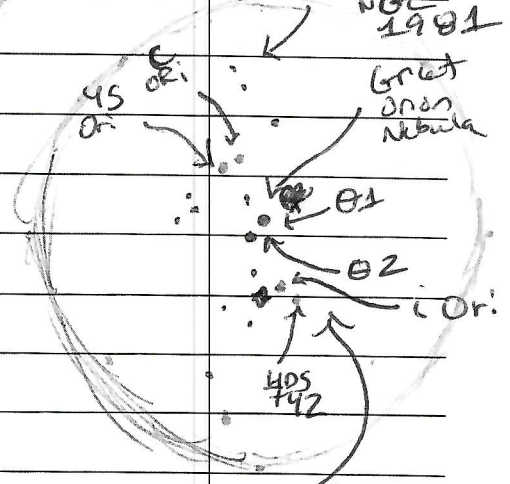
10x50
Binoculars

κ Ori
variable, double
(UPPER SWORD)
→ coal car
cluster
NGC
1981

Alnitak
 ζ Ori
double

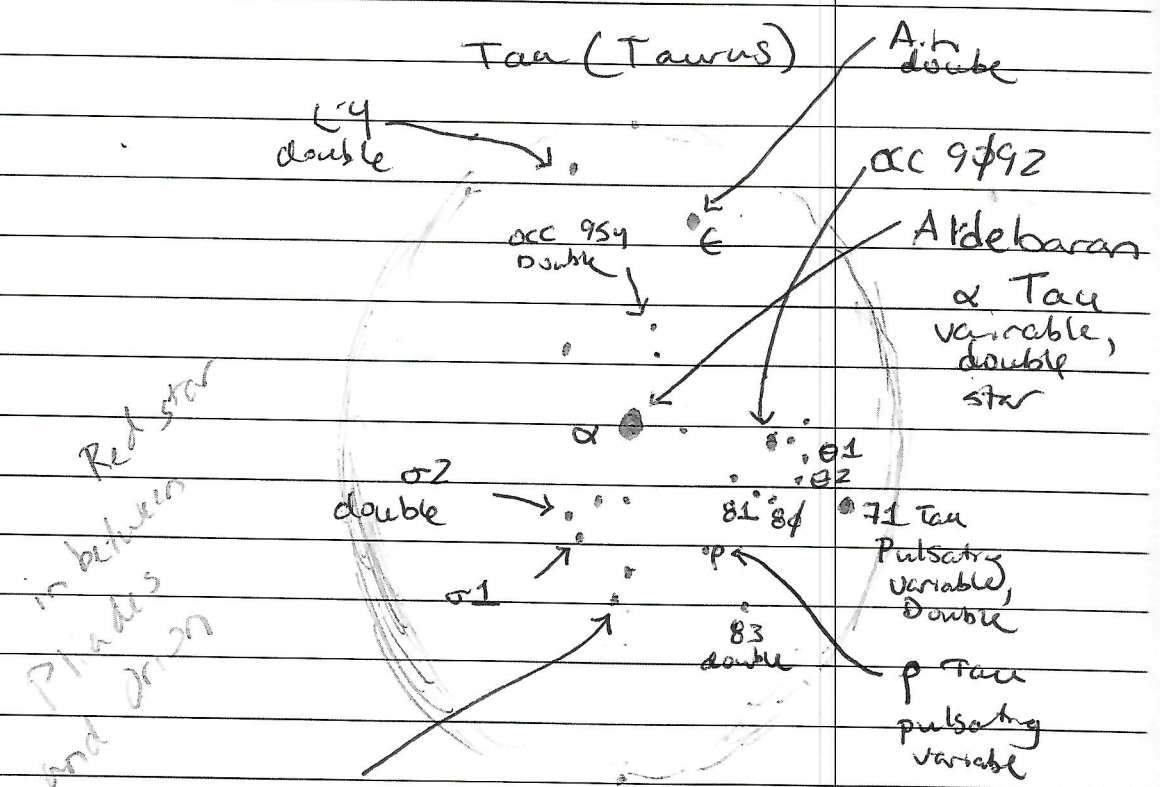
θ Ori
double

Belt
below
is
drum
belt



COST JEWEL
LOWER SWORD
NGC 1984

Aldebaran.
 RA 4h 35m 55s
 Decl +16° 30' 33" Oct 4 2022
 4:24 am
 PAI



CHR 153
 Rotating variable,
 double

40 x 50
 minocs

Hyades
 open cluster

